

## FUTURE BUILDING & LAND VISION

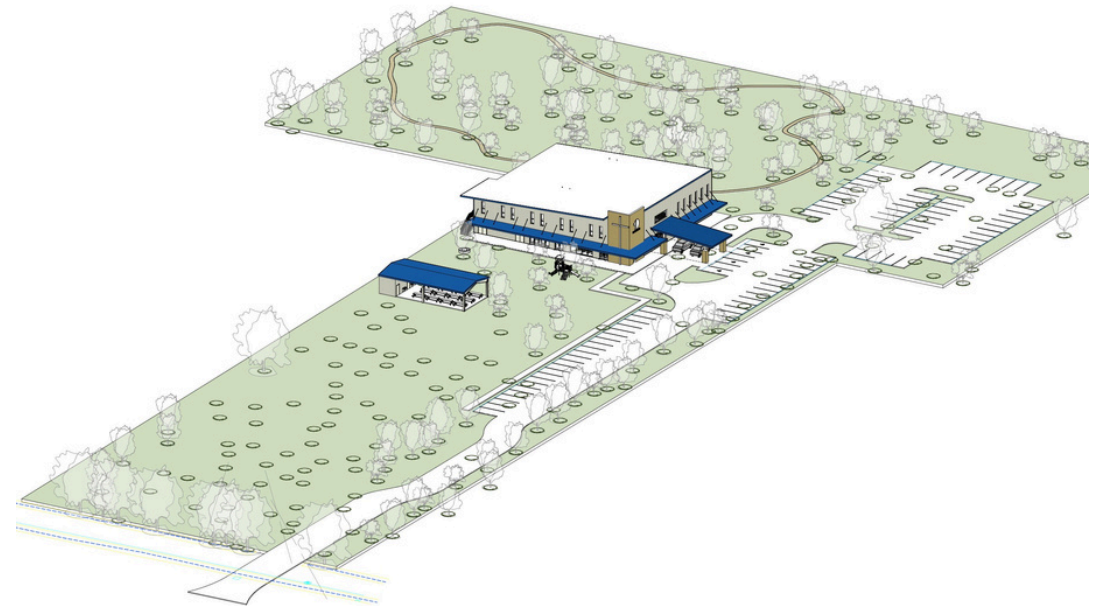
The Dwelling's land and buildings will be used in joyful service to Jesus and the mission and vision He has called us to. The land will help accomplish the needs of buildings, provide outdoor space for activities like Fire, Food, Friends, and be a resource for those joining Jesus on His mission. The initial building will be a simple design consisting of multipurpose spaces, specifically designed to support Sunday worship and to be a resource for The Dwelling's vision of gathering and going.

### Specific needs:

- *Designed with disconnected people in mind*
- *Multipurpose and Welcoming space for up to 250 worshippers*
- *Flexible seating*
- *Multipurpose and Safe space for Little Dwellers*
- *Multipurpose spaces used by church and community groups*

### Examples include:

- *G2 groups (small groups)*
- *Bible studies*
- *Athletics*
- *Youth and children's activities*
- *Banquets*
- *Homeschool groups*
- *Church planting initiatives*
- *Parking for up to 100 cars*
- *Kitchen facilities*
- *Additional land to support growth for The Dwelling's mission*



# PHASES APPROACH

As we take steps toward putting a Multi-Purpose Facility on our property, our leadership sees the need to take a “phase” approach to development. Due to costs, as well as our desire for some “sweat equity”, we see the facility being developed over 4 phases. The later phases may be accomplished through some “do it ourselves” work. The Courageous campaign is focused on funds to be raised to start phases 1 and 2.

## PHASE 1 >>

*Land developed (This is already in motion)*

## PHASE 2 >>

*Shell of building, bathrooms, kitchen, pavilion  
(Constructed with contractor)*

## PHASE 3 >>

*Build out interior first floor (Do this ourselves,  
utilize a contractor, or a combination of both)*

## PHASE 4 >>

*Build out interior second floor (Do this ourselves,  
utilize a contractor, or a combination of both)*

*The Courageous campaign’s financial goal is focused on funds to be raised to start phases 1 and 2.*

